

Bombardier Transportation – Heathrow T5 Project

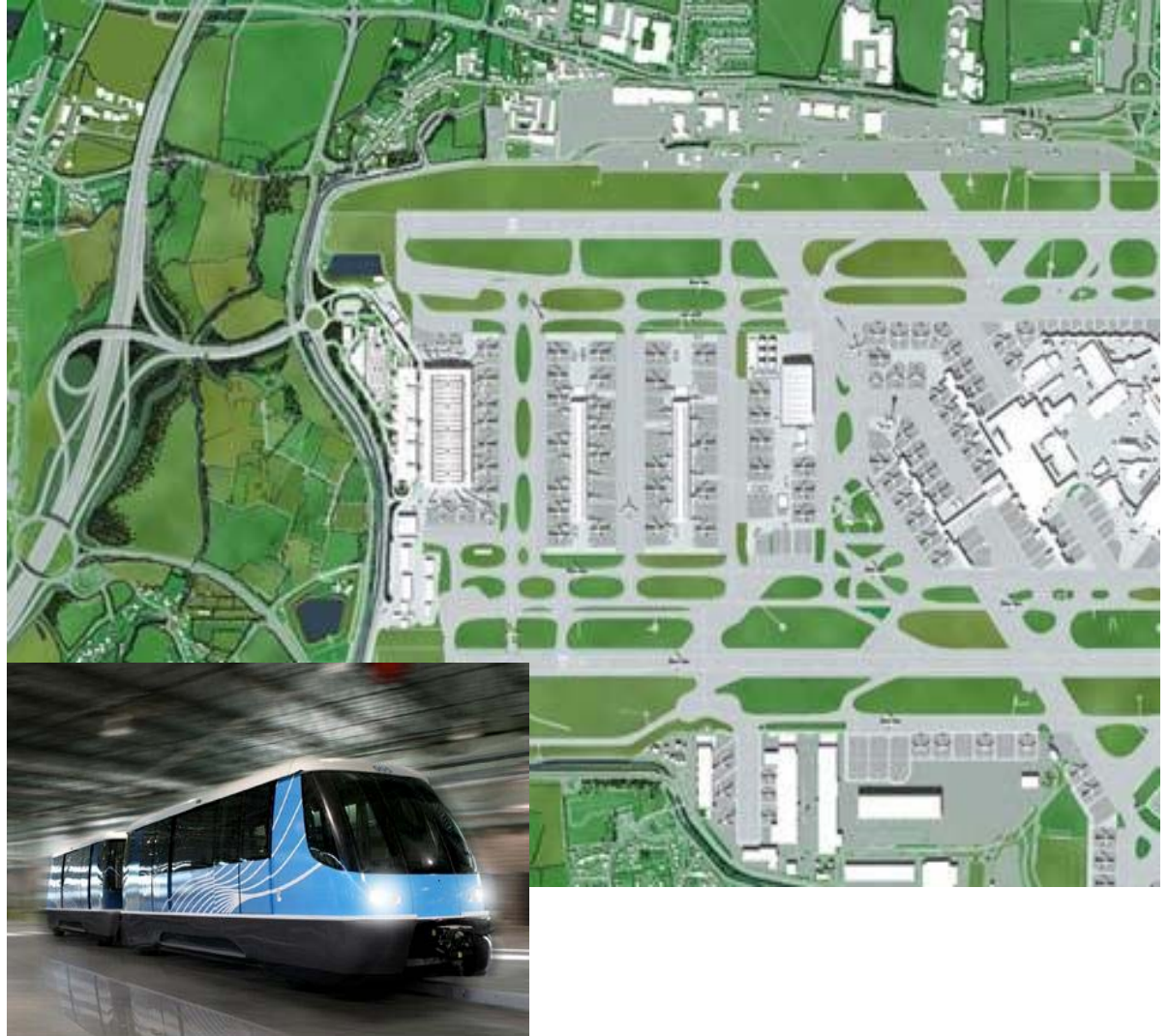
The Heathrow T5 Automated People Mover utilises Bombardier’s *Innovia* vehicles and *Cityflow* automatic controls and will provide transportation for passengers and airport staff using underground guideways between the T5 concourse ‘A’ and concourse ‘B’ (Phase 1 works).

There is also a Phase 2 scheduled to extend the APM to Terminal 5 concourse C.

Scope of Work

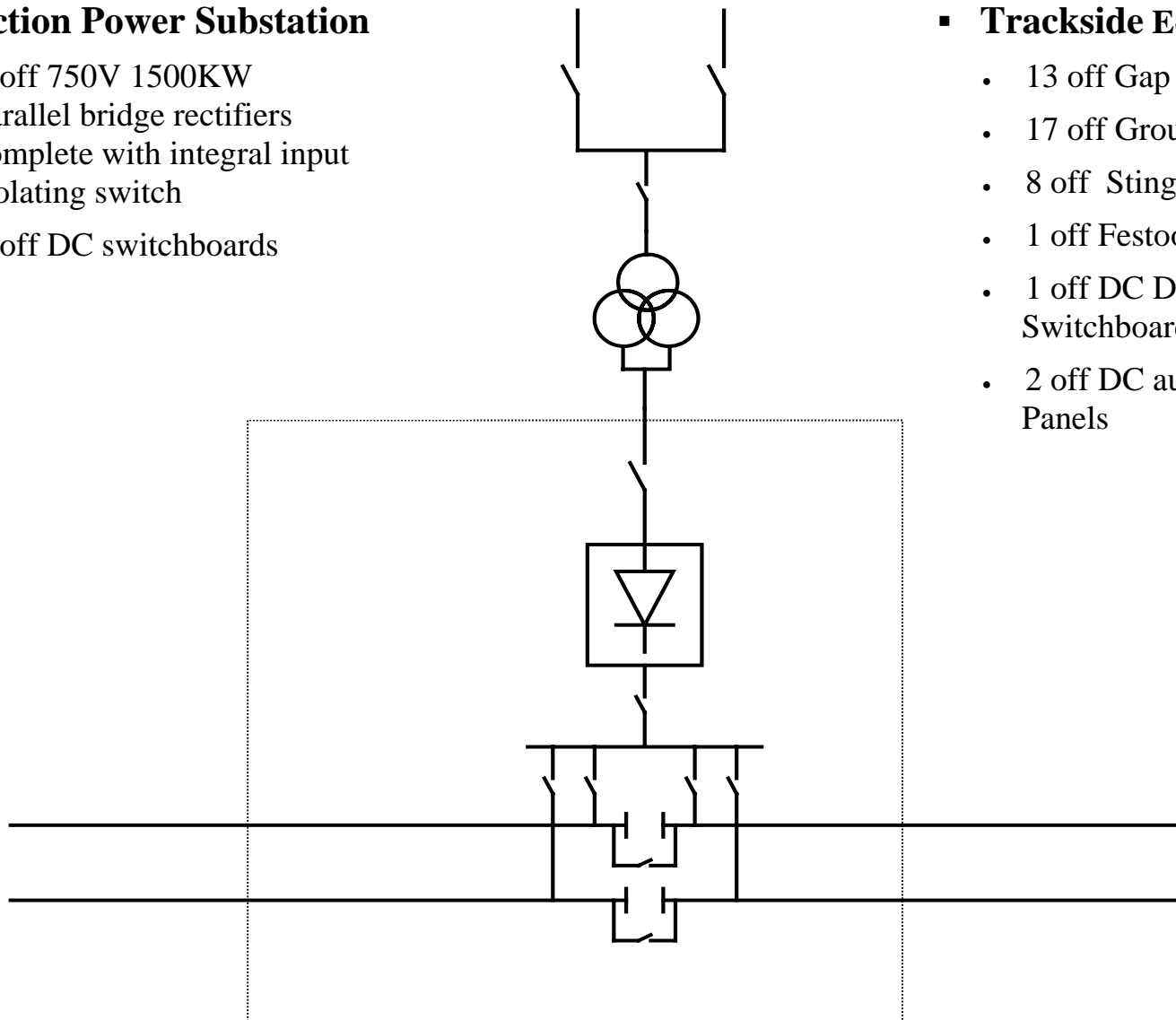
PMES’ scope of work encompasses the supply and delivery of the Phase 1 and 2 equipment and comprises one traction power substation and it’s associated trackside and maintenance supply equipment delivered against a challenging project programme.

PMES will also undertake the commissioning of all items and the provision of a comprehensive training programme.



▪ Traction Power Substation

- 2 off 750V 1500KW parallel bridge rectifiers complete with integral input isolating switch
- 2 off DC switchboards



▪ Trackside Equipment

- 13 off Gap Contactor Panels
- 17 off Ground Switch Panels
- 8 off Stinger Controllers
- 1 off Festoon Supply Panel
- 1 off DC Distribution Switchboard
- 2 off DC aux Distribution Panels